

Dandridge, Tennessee

Prepared for:

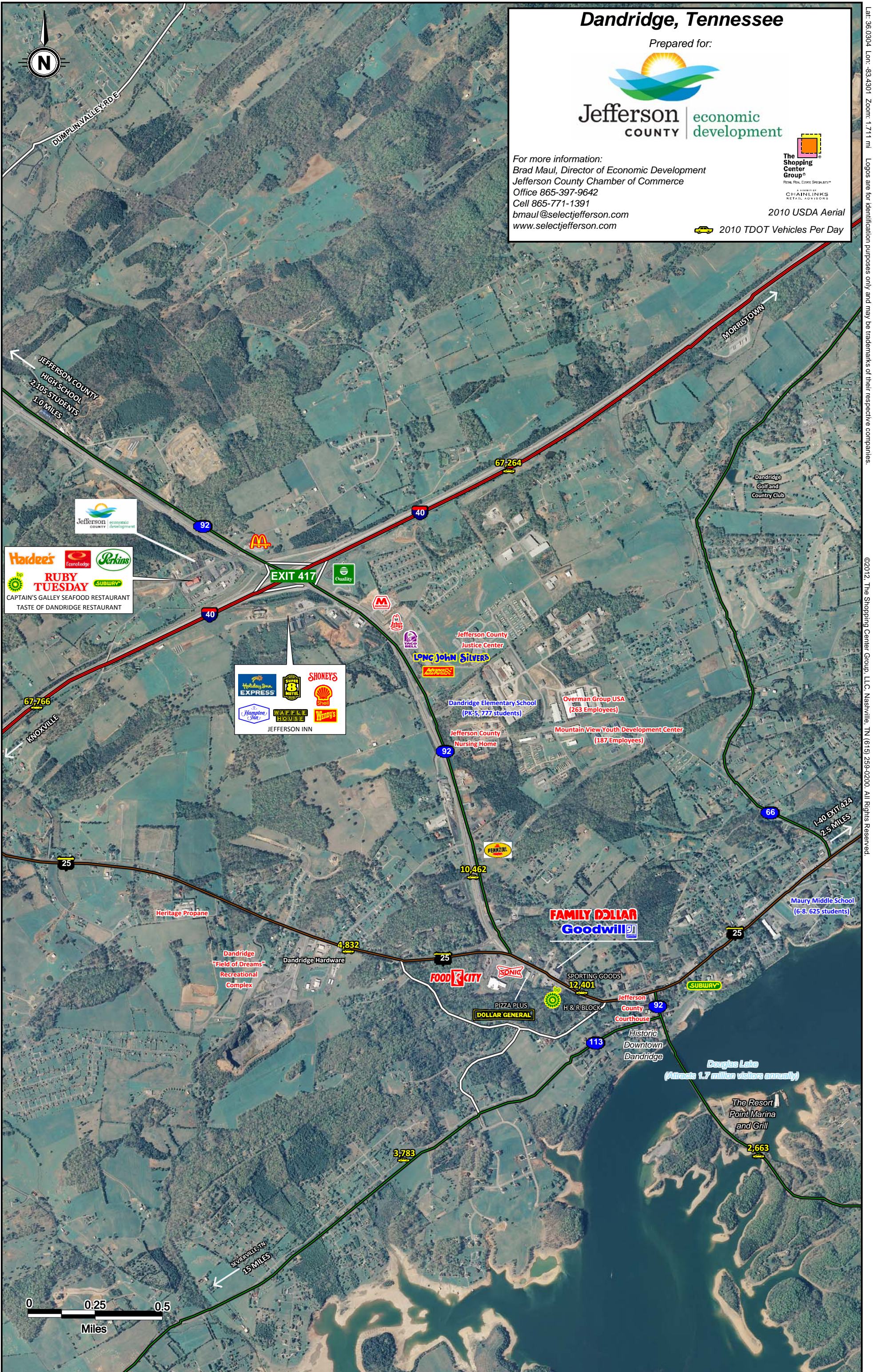


For more information:
Brad Maul, Director of Economic Development
Jefferson County Chamber of Commerce
Office 865-397-9642
Cell 865-771-1391
bmaul@selectjefferson.com
www.selectjefferson.com



2010 USDA Aerial

2010 TDOT Vehicles Per Day



Lat: 36.0304 Lon: -83.4301 Zoom: 1.711 mi Logos are for identification purposes only and may be trademarks of their respective companies. ©2012, The Shopping Center Group, LLC, Nashville, TN (615) 299-0200. All Rights Reserved.

This map was produced using data from private and government sources deemed to be reliable. The information herein is provided without representation or warranty.