

White Pine, Tennessee

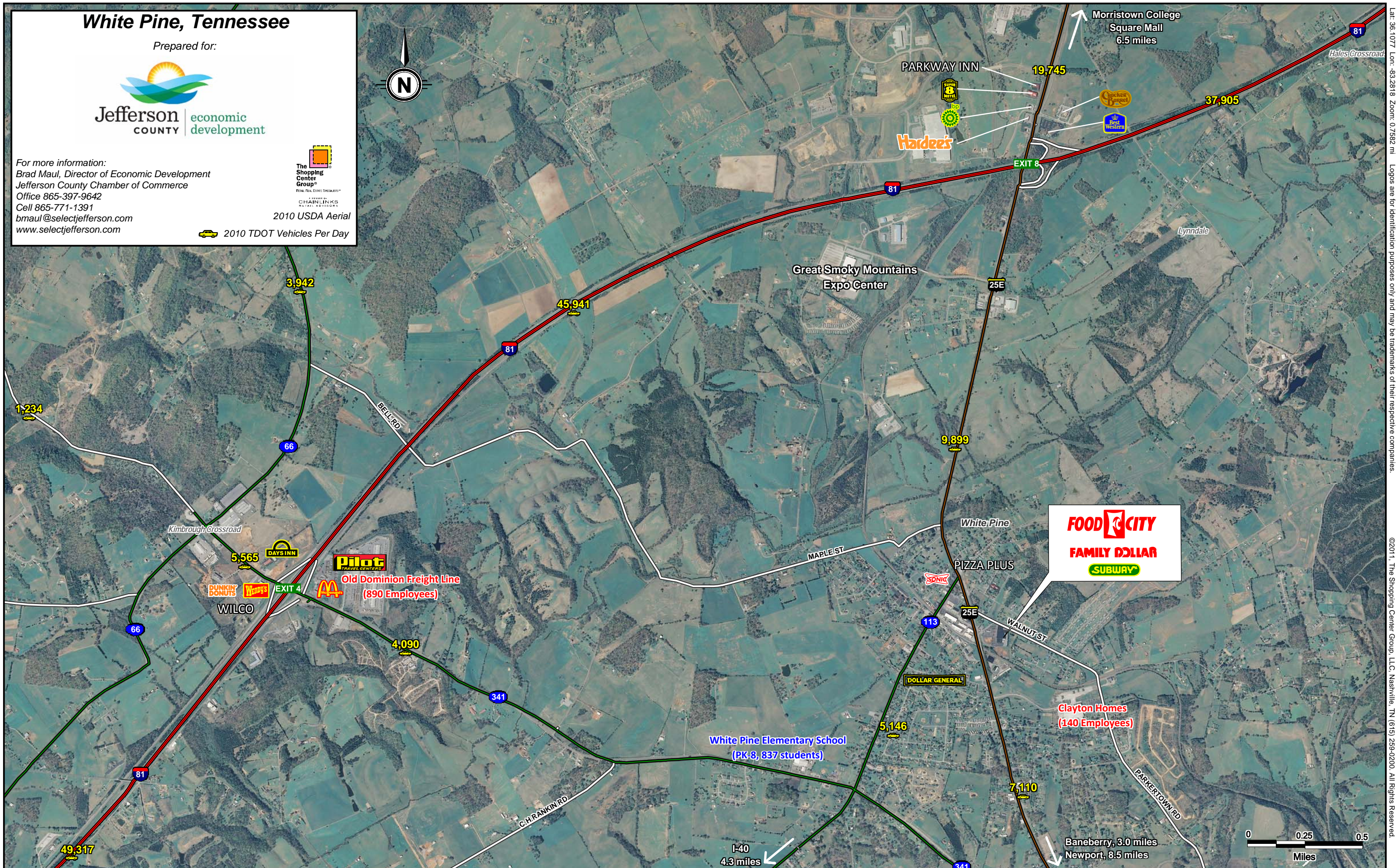
Prepared for:



For more information:
Brad Maul, Director of Economic Development
Jefferson County Chamber of Commerce
Office 865-397-9642
Cell 865-771-1391
bmaul@selectjefferson.com
www.selectjefferson.com



2010 USDA Aerial
2010 TDOT Vehicles Per Day



This map was produced using data from private and government sources deemed to be reliable. The information herein is provided without representation or warranty.